



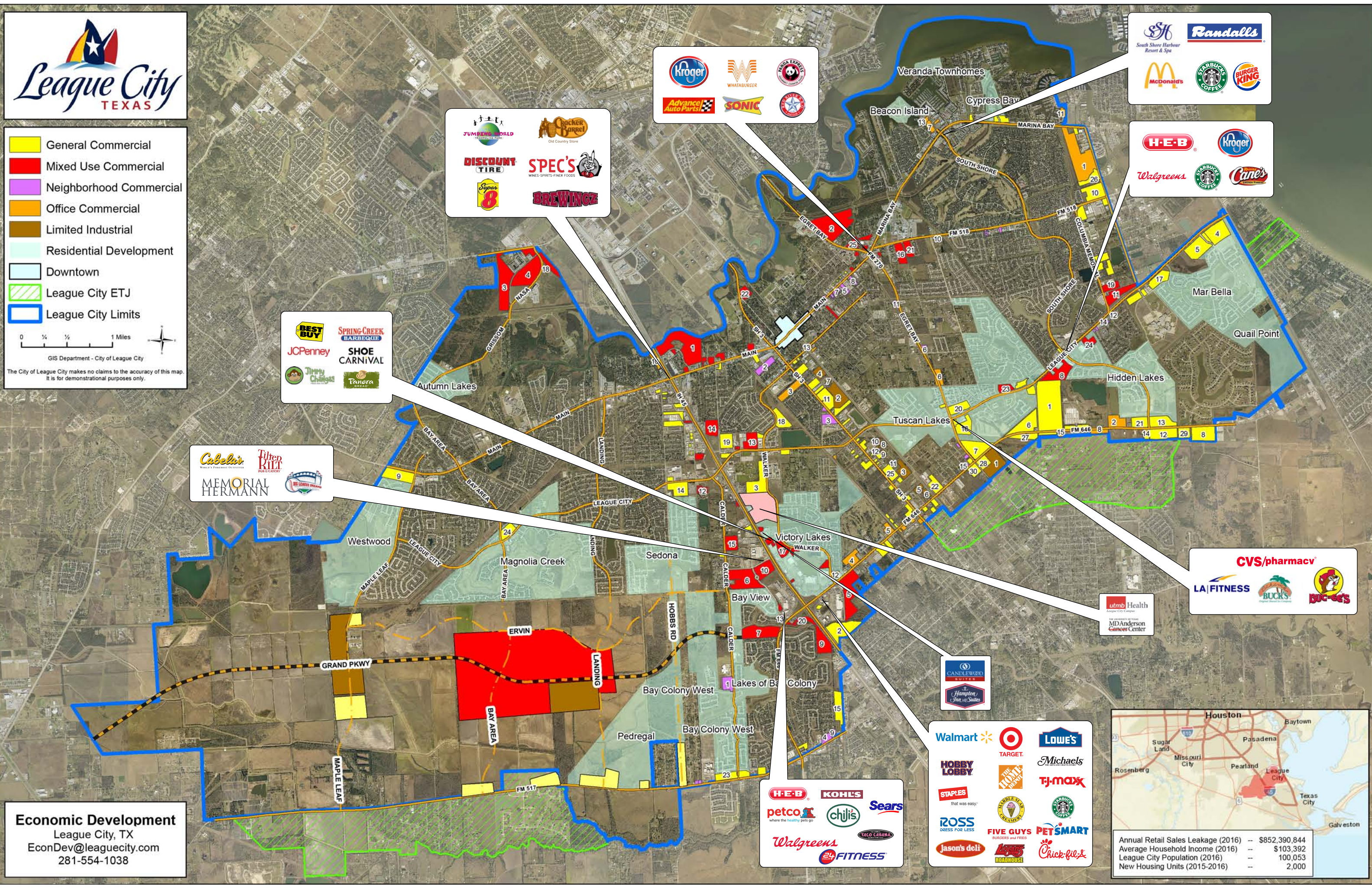
**Legend:**

- General Commercial
- Mixed Use Commercial
- Neighborhood Commercial
- Office Commercial
- Limited Industrial
- Residential Development
- Downtown
- League City ETJ
- League City Limits

0 1/4 1/2 1 Miles

GIS Department - City of League City

The City of League City makes no claims to the accuracy of this map. It is for demonstrational purposes only.



Kroger, Whataburger, Advance Auto Parts, Sonic, and other retail logos.

Jumbo World, Rocker Barrel, Discount Tire, Super 8, Spec's, and Brewinz logos.

South Shore Harbour Resort & Spa, Randalls, McDonald's, Starbucks, and Burger King logos.

H-E-B, Walgreens, Kroger, Starbucks, and Cane's logos.

Best Buy, JCPenney, Spring Creek Barbeque, Shoe Carnival, Jimmy Chuggas, and Panera Bread logos.

Cabela's, Tilted Kilt, and Memorial Hermann logos.

CVS/pharmacy, LA Fitness, Bucks, and Buc-ee's logos.

UTMB Health, MD Anderson Cancer Center logos.

Candlewood Suites and Hampton Inn & Suites logos.

H-E-B, Kohl's, Petco, Chilis, Sears, Walgreens, and 24 Fitness logos.

Walmart, Target, Lowe's, Hobby Lobby, Michaels, TJ-Maxx, Staples, Ross, Five Guys, PetSmart, Jason's Deli, and Chick-fil-e logos.

**Economic Development**  
 League City, TX  
 EconDev@leaguecity.com  
 281-554-1038

Regional map showing Houston, Pasadena, Baytown, Sugar Land, Missouri City, Rosenberg, Pearland, League City, Texas City, and Galveston.

Annual Retail Sales Leakage (2016)	-- \$852,390,844
Average Household Income (2016)	-- \$103,392
League City Population (2016)	-- 100,053
New Housing Units (2015-2016)	-- 2,000

### General Commercial

1. 92.28 Acres
2. 30.80 Acres
3. 29.13 Acres
4. 27.95 Acres
5. 27.35 Acres
6. 26.57 Acres
7. 26.56 Acres
8. 24.98 Acres
9. 24.11 Acres
10. 21.65 Acres
11. 20.99 Acres
12. 20.54 Acres
13. 18.96 Acres
14. 18.82 Acres
15. 18.43 Acres
16. 16.64 Acres
17. 15.92 Acres
18. 14.03 Acres
19. 14.00 Acres
20. 13.67 Acres
21. 12.84 Acres
22. 11.82 Acres
23. 11.76 Acres
24. 11.48 Acres
25. 11.02 Acres
26. 10.86 Acres
27. 10.28 Acres
28. 9.23 Acres
29. 9.06 Acres
30. 8.40 Acres

### Mixed Use Commercial

1. 62.76 Acres
2. 59.41 Acres
3. 44.41 Acres
4. 40.45 Acres
5. 39.67 Acres
6. 35.3 Acres
7. 32.97 Acres
8. 23.87 Acres
9. 22.05 Acres
10. 18.96 Acres
11. 18.67 Acres
12. 16.22 Acres
13. 15.65 Acres
14. 15.20 Acres
15. 14.17 Acres
16. 13.22 Acres
17. 11.58 Acres
18. 9.84 Acres
19. 9.45 Acres
20. 9.29 Acres
21. 9.27 Acres
22. 8.31 Acres
23. 7.93 Acres
24. 7.76 Acres
25. 6.60 Acres

### Neighborhood Commercial

1. 11.03 Acres
2. 10.30 Acres
3. 9.48 Acres
4. 5.25 Acres
5. 4.01 Acres
6. 2.69 Acres
7. 2.48 Acres
8. 2.47 Acres
9. 2.33 Acres
10. 1.99 Acres
11. 1.74 Acres
12. 1.73 Acres
13. 1.65 Acres
14. 1.36 Acres
15. 1.19 Acres

### Office Commercial

1. 62.91 Acres
2. 14.83 Acres
3. 14.23 Acres
4. 12.47 Acres
5. 6.00 Acres
6. 5.96 Acres
7. 4.95 Acres
8. 4.94 Acres
9. 4.93 Acres
10. 4.81 Acres
11. 3.62 Acres
12. 3.09 Acres
13. 2.82 Acres
14. 2.30 Acres
15. 1.79 Acres

### Limited Industrial

1. 27.74 Acres
2. 21.70 Acres
3. 11.29 Acres
4. 7.60 Acres
5. 4.06 Acres
6. 3.39 Acres
7. 2.08 Acres
8. 1.78 Acres
9. 1.78 Acres
10. 0.89 Acres
11. 0.74 Acres
12. 0.74 Acres
13. 0.39 Acres

## Residential Development Lots

Name	Total Lots	Available
Autumn Lakes	467	65
Bay Colony West	1774	860
Bay View	375	178
Beacon Island	850	845
Cypress Bay	99	61
Hidden Lakes	867	441
Lakes of Bay Colony	120	120
Magnolia Creek	1202	400
Mar Bella	1245	226
Pedregal	1025	1025
Quail Point	560	560
Sedona	914	227
Tuscan Lakes	1841	367
Veranda Townhomes	218	193
Victory Lakes	694	72
Westwood	1297	961

### Business Recruitment Targets

- Corporate Headquarters
- Light, High Technological, and Advanced Manufacturing
- Sports, Medicine, Fitness, and Wellness
- Medical Research and Development
- Technological Research and Development
- Potable Water Technology
- Aerospace

### Quality of Life

- 7th best small city for families in the nation - by NerdWallet
- League City among 10 safest big cities in Texas- by ValuePenguin
- 8th best place to live in Texas- by NerdWallet
- #1 large school district in Houston Metropolitan Area  
- by Children at Risk and the Houston Chronicle